

Best practice on establishing a research and innovation network bridging scientists and innovators



George Beers

Wageningen University & Research



Introduction

‘Connecting the Dots’

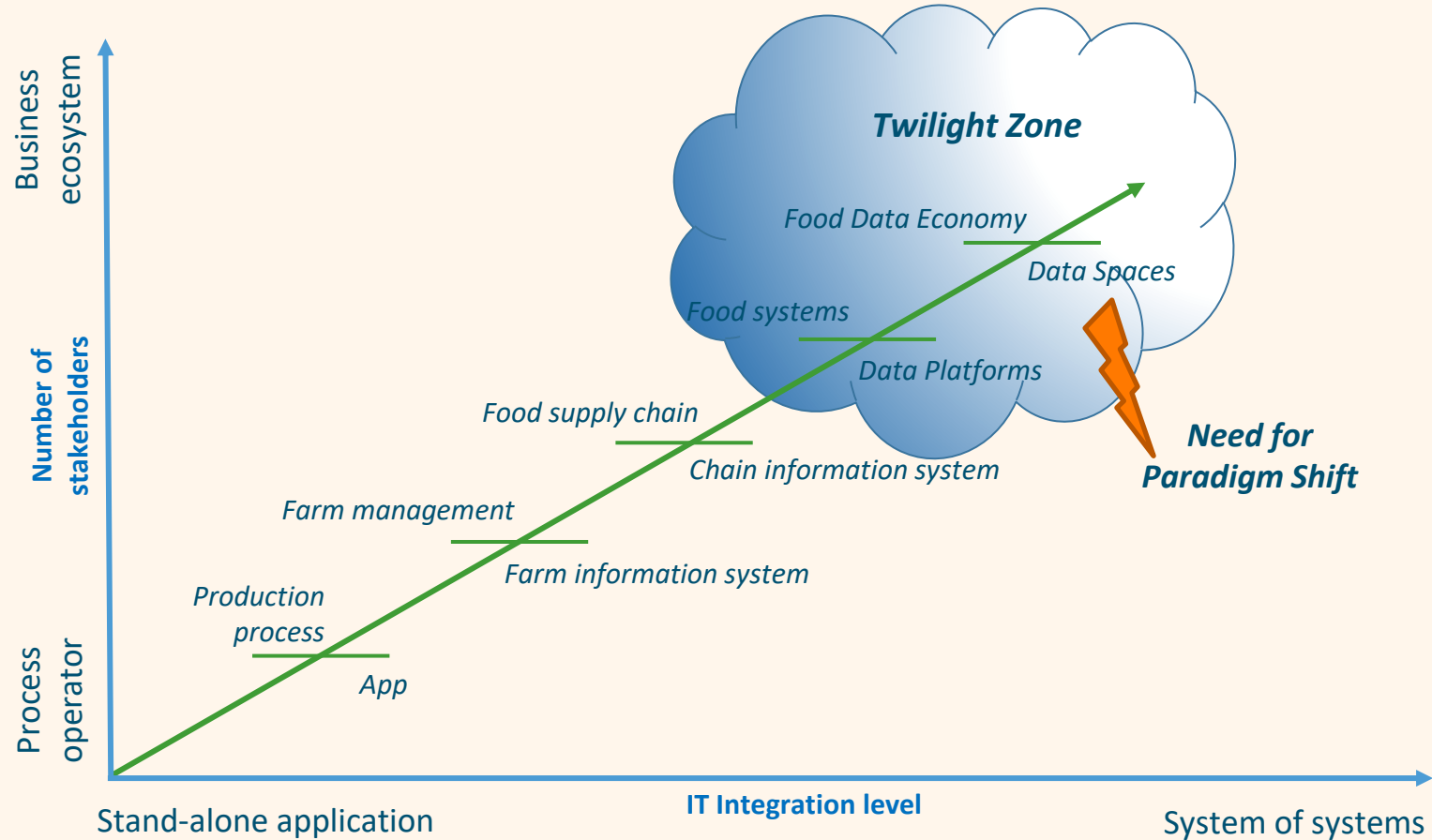
Experiences from:

- Digital Innovation in AgriFood
- Horizon Innovation Actions
- SmartAgriHubs

Food System Transition

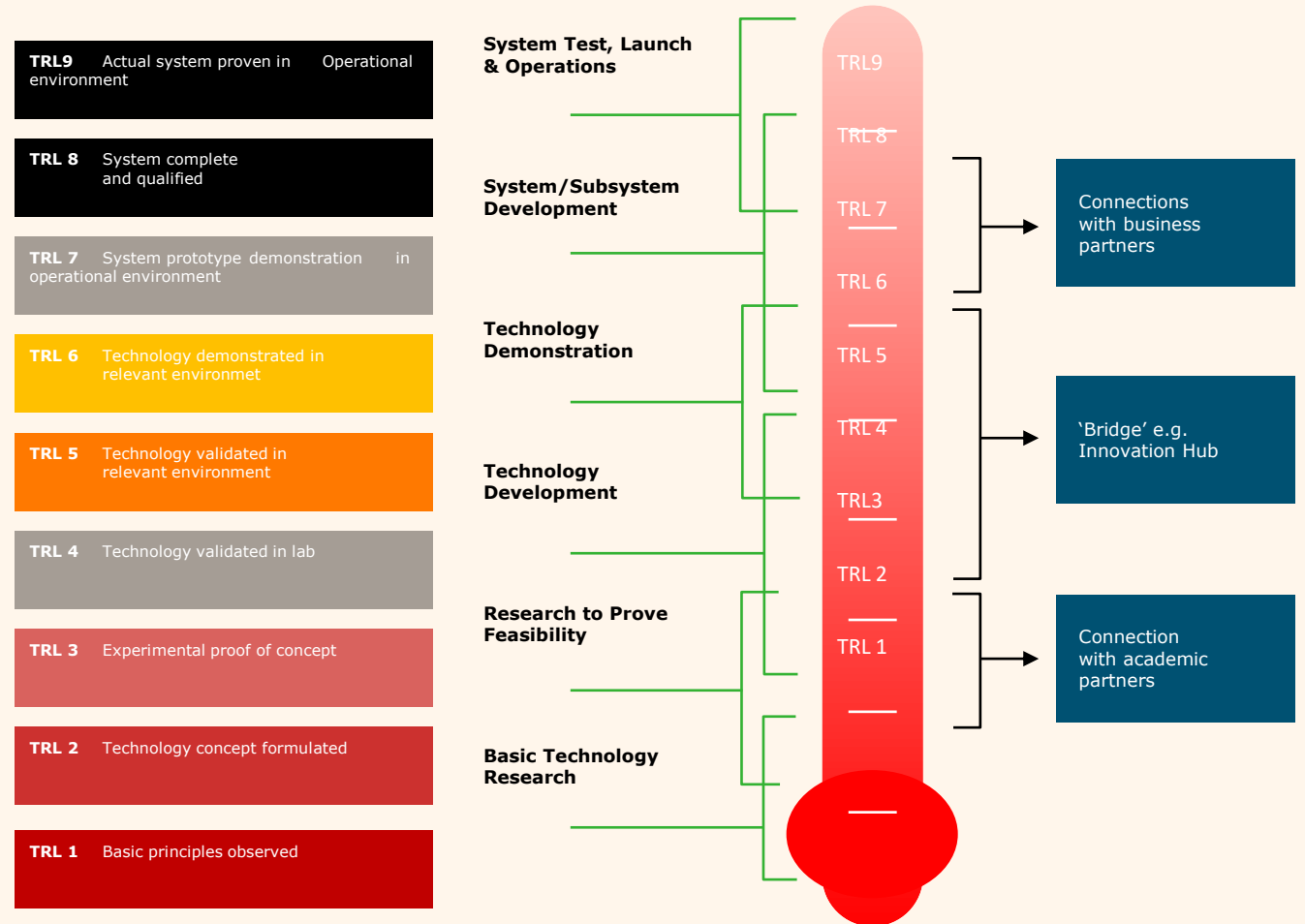
Scoping Research & Innovation

Complexity in Innovation

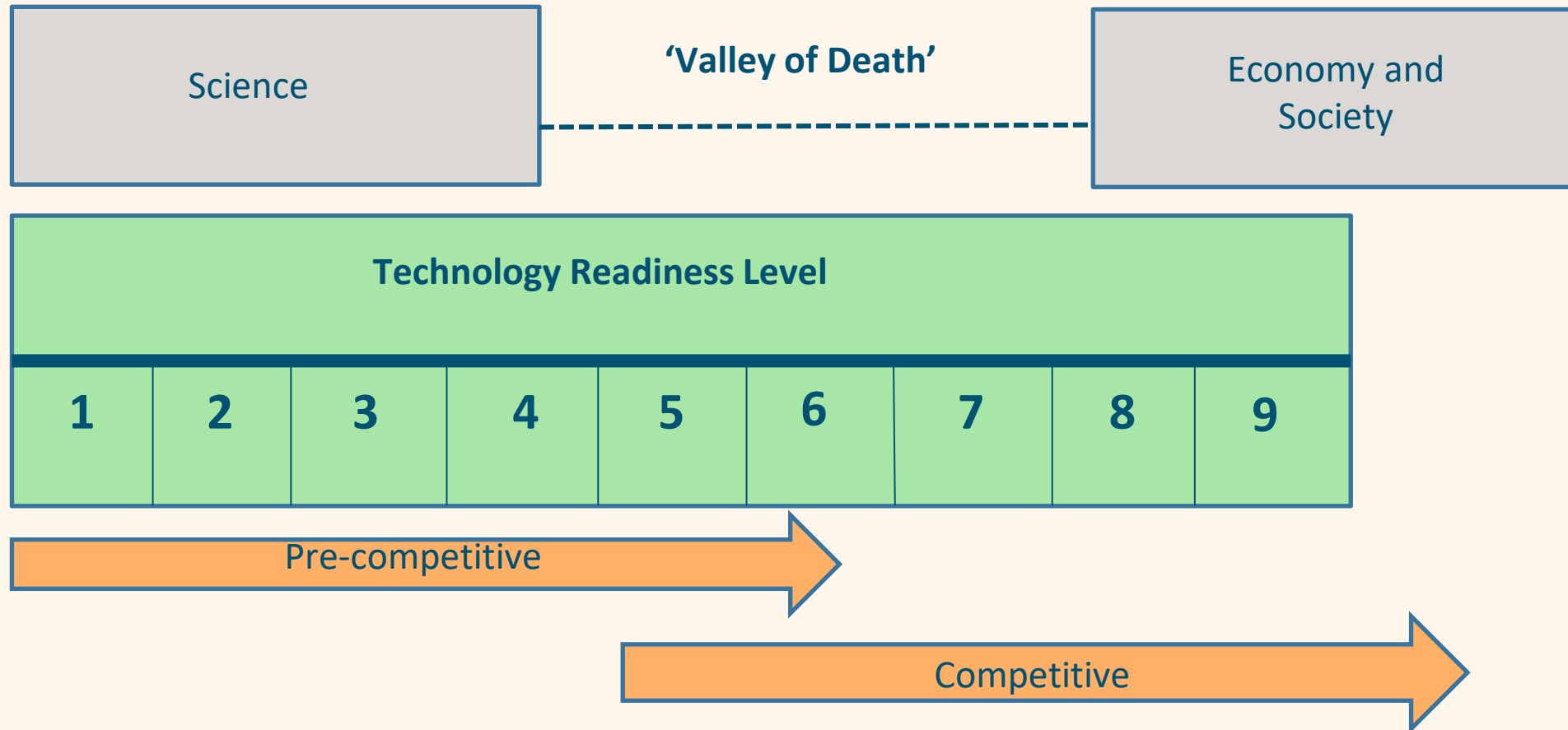


Stages in Innovation (TRLs)

Ensure an effective
Innovation Value Chain
by "connecting the dots"
for linking all TRL levels

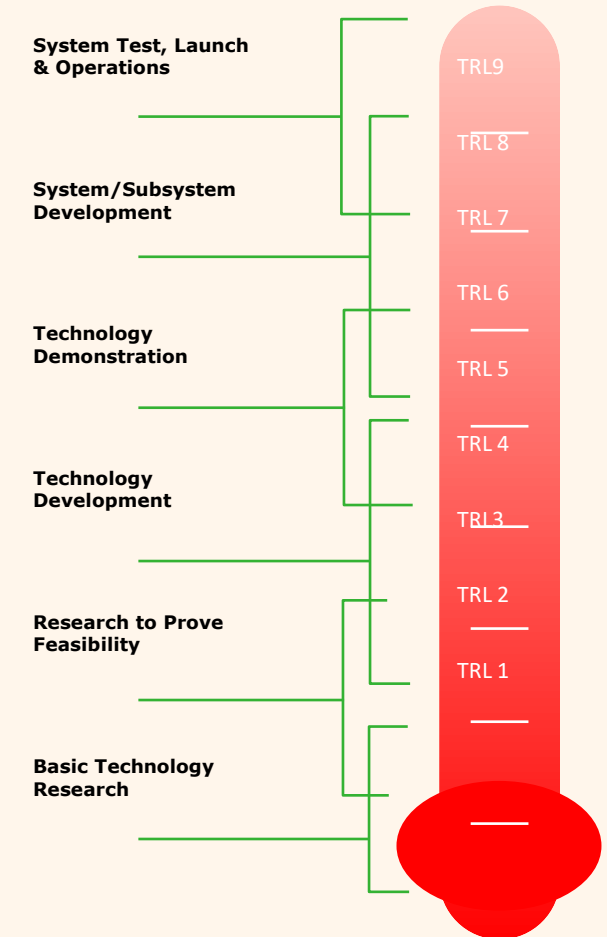


'Valley of Death' in Innovation

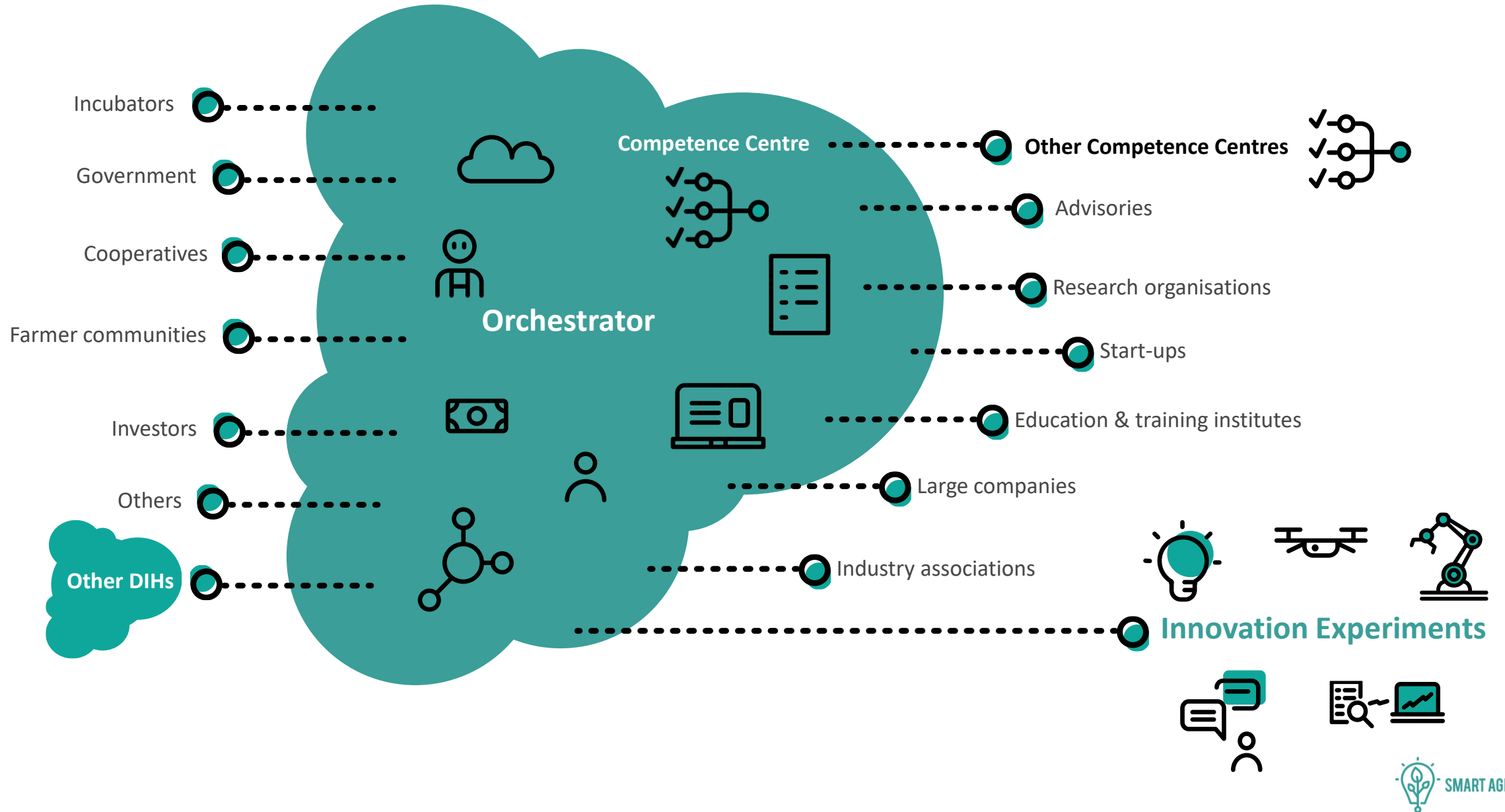


Activities in the TRLs

TRL	Service examples
TRL 8-9	<ul style="list-style-type: none"> Training and education Scaling up Acceptation Access to Funding
TRL 5-7	<ul style="list-style-type: none"> Business models Legislation Co-innovation Demonstration Validation in operational environment
TRL 3-4	<ul style="list-style-type: none"> Applied research Prototyping Experiments Test in controlled environment



INNOVATION ECOSYSTEM



INNOVATION SERVICES

	Service	Activities
Ecosystem	Community building	Scouting, brokerage, awareness creation, dissemination, ecosystem building
	Strategy development	Market intelligence, market assessments, roadmapping
	Ecosystem learning	Workshops, seminars to share knowledge and experience
	Project development	Identification of opportunities, creating consortia, development of proposals
	Lobbying	Representing interests during meetings & conferences, organizing (country) visits
Technology	Strategic RDI	Joint, pre-competitive R&D
	Contract research	Specific R&D, technology concept development, proof of concept
	Technical support on scale-up	Concept validation, prototyping, small series production
	Provision of technology infrastructure	Renting equipment, low rate commercial production, offering platform technology infrastructure
	Testing and validation	Certification, product demonstration, product qualification
Business	Incubator/accelerator support	Voice of customer, market assessment, business development, consortia building, offering location
	Access to finance	Financial engineering, connection to funding sources, investment plans
	Skills and education	Courses, workshops, offering technological infrastructure for educational purposes

HOW — practical examples

Community Building in Practice - Projects

2011-2013: **SmartAgriFood** – a FIWARE-based conceptual architecture and prototype applications (5 M€)



2013-2015: **FIspace** – B2B business collaboration platform for agri-food & logistics (+ apps) (13.5 M€)



2014-2016: **Accelerators**: SmartAgriFood2, FInish, FRACTALS (~17 M€)
- 125 apps/start-ups based on FIWARE/FIspace



Sep. 2016: **FIWARE Foundation** established with 3 verticals:
Smart Cities, Industry and **Agri-Food**

2017-2020: **IoF2020** – The Internet of Food and Farm (30 M€) - IoT large-scale pilot for smart farming and food security



2018-2022: **SmartAgriHubs** – Connecting the dots to unleash the innovation potential for digital transformation of the European Agri-Food sector (20 M€)

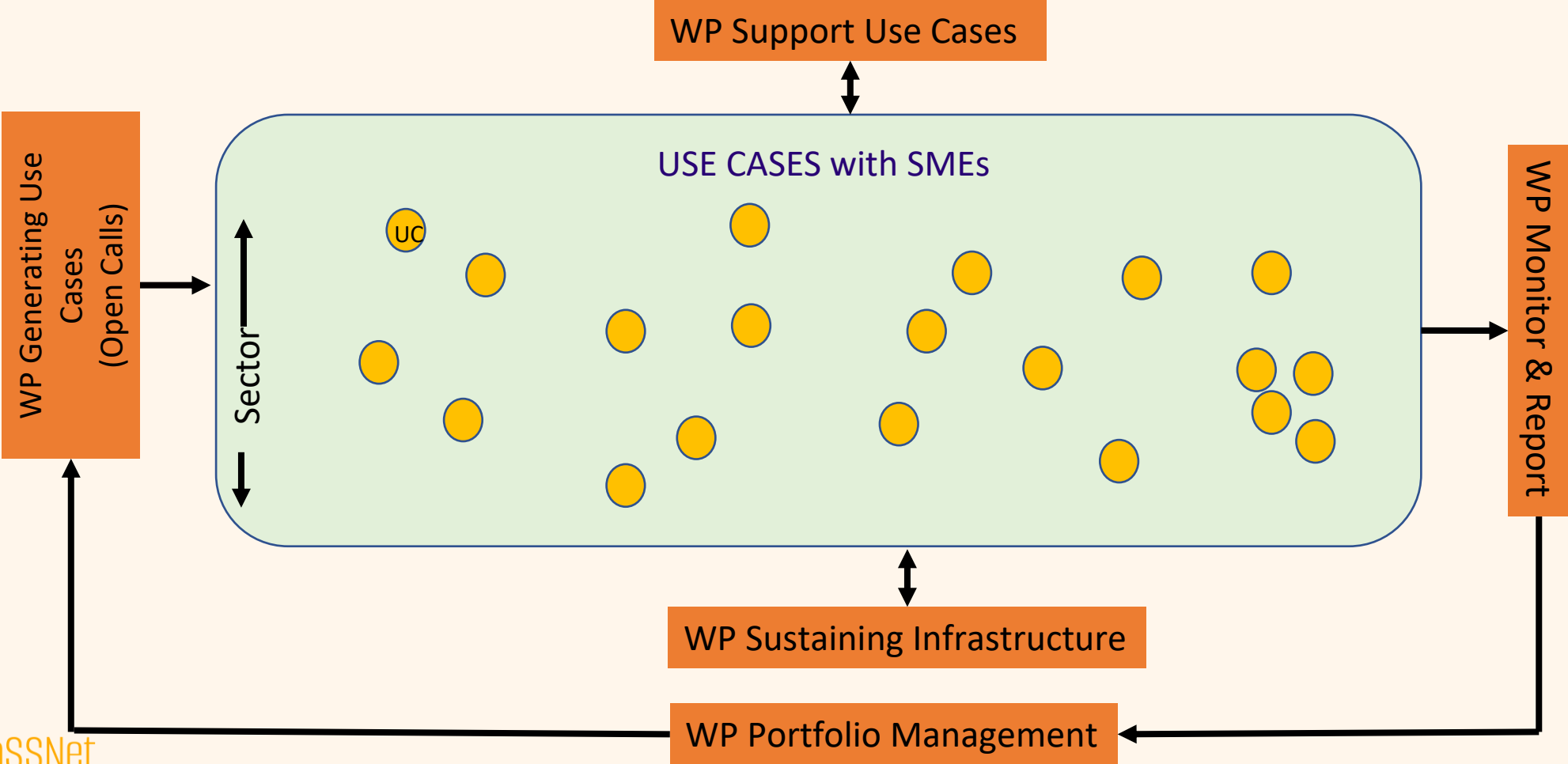


Community Building in Practice

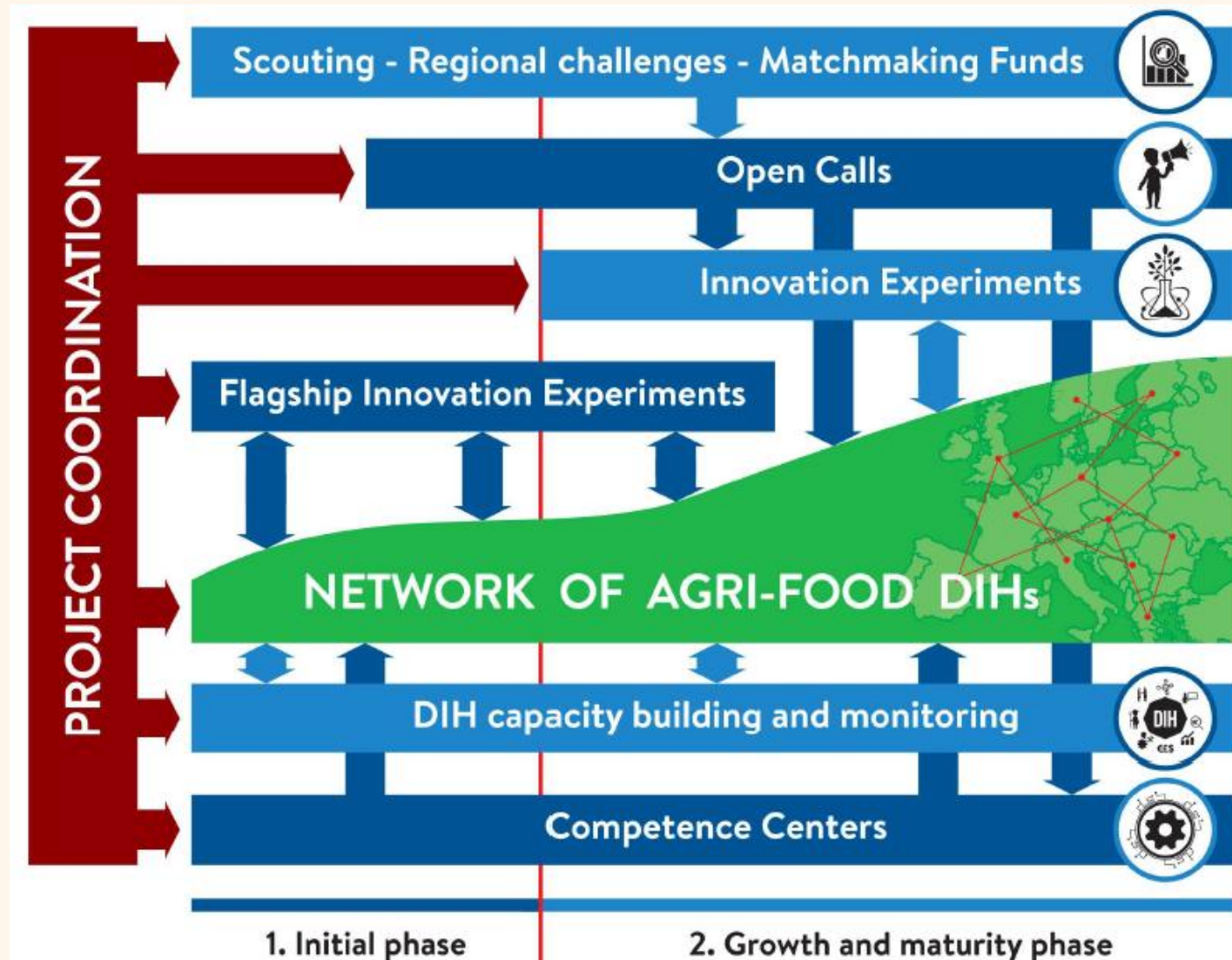
- Use Projects with adequate Project Design & Partners
- Strong WP on 'Ecosystem Development'
 - Professional bureau understanding the sector
 - Physical Events – bringing people together (e.g Synergy Days)
 - Use social media
 - Substantial budget
 - Be Inclusive
- WP dedicated on connecting related initiatives
- Build upon existing infrastructure (e.g. BICs, EDIH)

WPs and Use Cases

Project design for inclusion SMEs

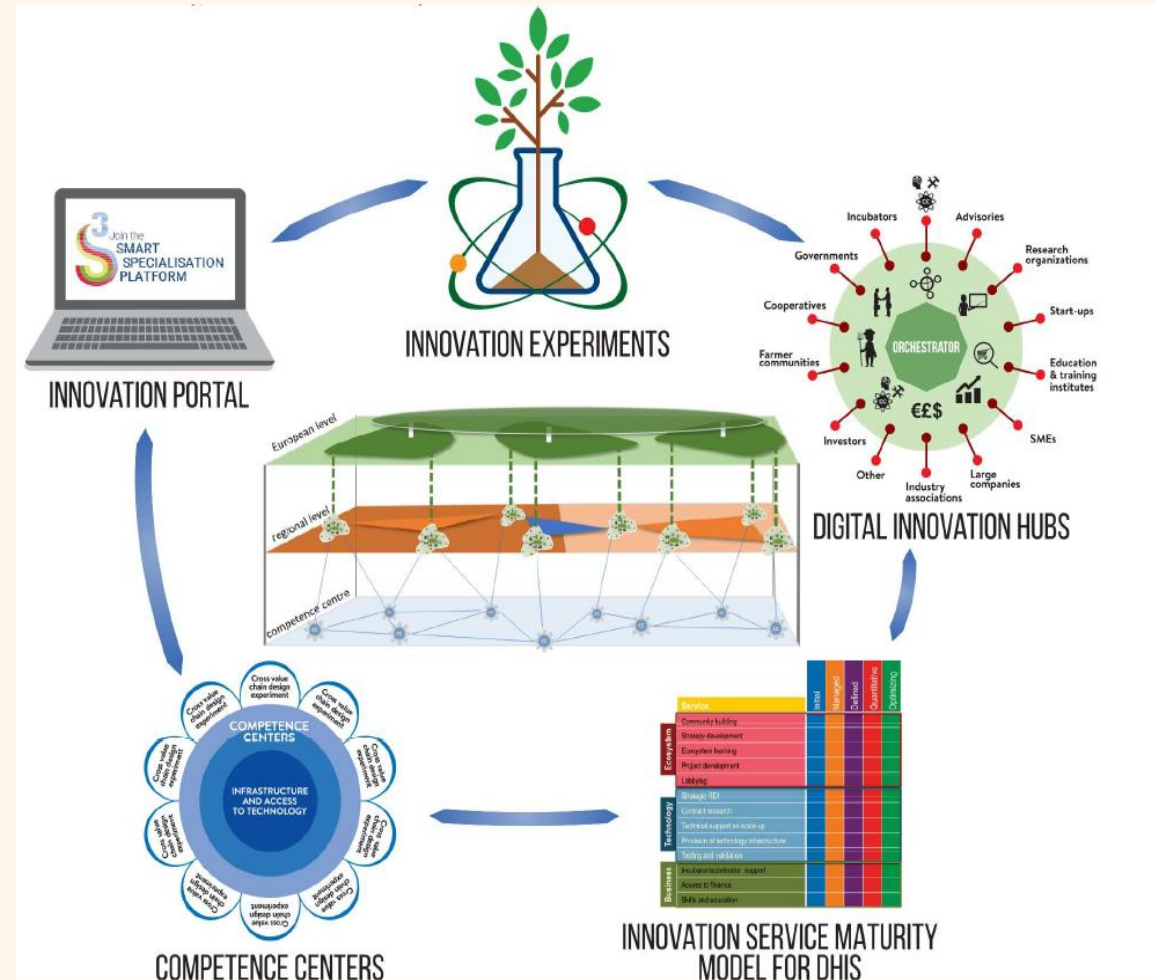


Approach for Network building projects



Community Building in EU – Regional aspect

- Innovation in EU projects
- Impact in Regions
- Facilitate ‘Replication’
- Reaching out to Regional level
 - Language
 - Regional specifics
- Regional Innovation Ecosystem
 - Innovation Hubs
- Embedded in EU ecosystem



Including Policy in the Network

HOW

- Consider Project Officer (PO) as partner
- Contribution and participation EC in events
- Presentation/workshop in DG building
- Workshop with Euro Parliament
- Network instrumental for EC

WHY

- EC customer
- Impact:
 - Direct insight helps PO in preparing work program
 - Fluent policy recommendations at times EC needs it
- Agility - adapt project to change in policies

Conclusion

Effective R&I requires active networks to 'Connect the Dots' for the Chain of Innovation Services.



FoSSNet

CONFERENCE 2025



Funded by
the European Union



UK Research
and Innovation

Thank you!

14 April 2025